

Automatic Bundle Shrink Wrapper for Aseptic Packages

Safe

Versatile

Easy to use

Economical



Autopack SLA with welding bar is an intermittent bundle shrink wrapper with side infeed and automatic grouping system. Specifically designed to handle UHT packages, the machine is available in single track or tandem configuration, grouping system by pneumatic or motor driven cycling pusher.

Single lane infeed conveyor



Pneumatic or Cycling pusher



90 degree or Inline outfeed



The Autopack Package :Faster - Smaller - Better Pack - Less Energy

Standard Features

- Quick & Easy changeover
- Stainless steel construction
- Speed up to 15,000 pph
- Better shrink through more efficient air circulation

Optional Features

- Printed film registration device
- Tear strip perforation device
- Card inserter
- Single track or Tandem operation



Autopack designers pay particular attention to specifying materials and finishes that are durable, do not affect the packaged product and remain serviceable for a long time.

Explore Shrink Wrapping and our range of Machines at
www.autopack.com



Automatic Bundle Shrink Wrapper for Aseptic Packages

Operation

● Following upstream straw application, packages arrive at the side of machine on a single lane infeed conveyor. Here, a pneumatic sequencer and pusher collate the groups into desired formats as pre-selected on HMI.

● Once ready, the pusher transfers the collations through a web of LDPE film into the welding station. As it retracts, a pneumatically operated welding bar descends to cut and weld the film, at the same time enclosing the group of packages in a horizontal sleeve of shrinkable plastic film.

● After completion, the welding bar ascends, allowing another group of packages to be transferred to the welding station, displacing the previously wrapped collation onto the shrink tunnel conveyor. Tunnel conveyor takes the wrapped group of packages through the hot

chamber where recirculated hot air causes the plastic film to shrink, conforming to the shape of the contents. The open ends of the sleeve shrink down to a small opening at each end of the pack, often called the "Bulls Eye".

● Once the pack is out of the hot chamber, forced air is used to cool and tighten the plastic wrap so it is ready for manual packing into shipping boxes or automatically conveyed to Autopack tray shrink wrapper or wrap-around case packer.

● Depending on required speed, a single or dual track (tandem) machine model is chosen, each configurable with pneumatic, or faster, unique to Autopack, motor driven cycling pusher.

Specifications		(All parameters in mm except "Film thickness")		45SLAM20	62SLAM20	82SLAM25
Film	Max roll width	wf		430	2x280	2x380
	Film thickness (µm)	tf		35 < tf < 100		
	Max roll dia	df		300 or max roll weight 25kg (whichever comes first)		
Pack Size	Max pack width ¹⁾	wp		300	220	320
	Max pack depth ²⁾	dp		210	150	210
	Max pack height ³⁾	hp		180	180	240
Packing Speed	*Single Row (3x1, 4x1) ⁴⁾	Packs/min		30	62	55
	*2 Rows / 3 Rows ⁴⁾	Packs/min		17 / 12	25 / 20	18 / 22
Electrical Supply	Average power	kW		9	10	11
	Max power	kW		12	14	16
Available in 220/380/415, 3ph, N+E, 50/60Hz						
Compressed Air	Working pressure	kPa		600	600	600
	*Consumption	NL/Cycle		8	5	8

Note:

1) Maximum stated pack width can only be achieved if the pack depth and the height are not at their maximum, in general as the pack depth or height goes up, then for a given film size, width of the pack must decrease.

2) Max Pack Depth can be varied with machine configuration.

3) The Max Height depends on pusher option configuration.

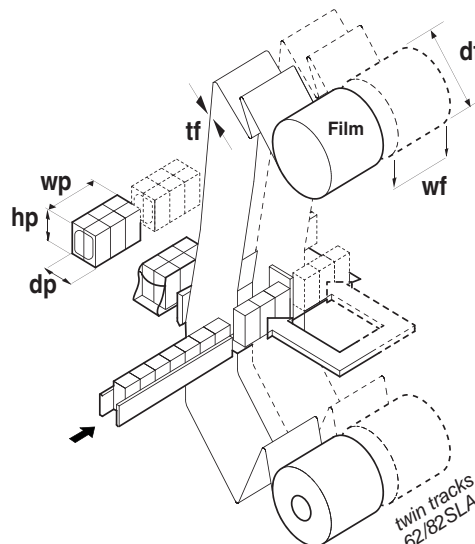
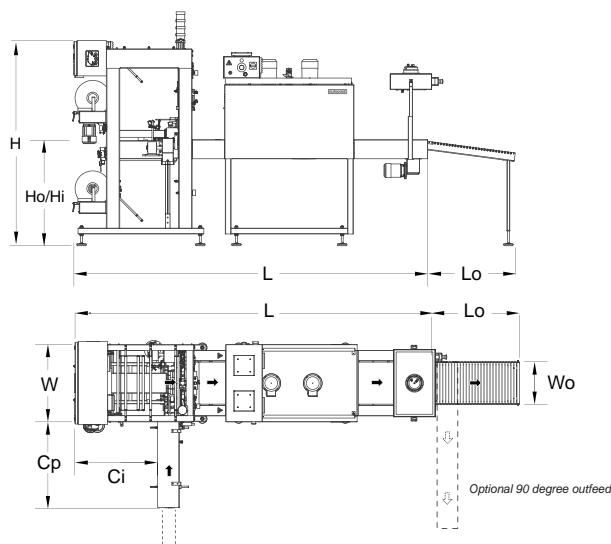
4) Packing Speed and machine consumption are indicated for the cycling pusher version. The Max Speed will also depend on package style, volume and packing format (single, two, or three rows).

5) Height is adjustable from 830mm up to 900mm. Extension possible on request.

* Operating with cycling pusher (can be varied with pneumatic pusher)

Dimensions		(All parameters in mm)		45SLAM20	62SLAM20	82SLAM25
Total System	Overall Length	L		3005	3005	3005
	Height	H		1680	1680	1680
	Width	W		650	800	1000
	Infeed Height ⁵⁾	Hi		830	830	830
	Outfeed Height ⁵⁾	Ho		830	830	830
Infeed Conveyor	Projection (Approx.)	Min. CP		590	590	590
	Indent (Approx.)	Ci		750	750	750
Outfeed Roller	Length	Lo		750-1500	750-1500	750-1500
	Width	Wo		375	525	725

The above parameters are constantly reviewed and updated and may vary from project to project depending on customers requirements.



twin tracks
62/82 SLA