

## Cardboard Tray Packer with Horizontal Collation

Safe

Compact

Easy to use

Economical



CZH / CUH is an automatic cardboard tray packer with horizontal collation and side loading principle. It can handle various product shapes such as cans, bottles, cartons, single products or multipacks. Autopack tray packers are among the most compact machines available on the market for speed up to 20 trays or cases/min. Machine is available in standard version (CZH) or U-shape layout (CUH) and can combine with Autopack bundlers SLN/SIT.

**Single or Multilane infeed**

**Side loading with front stabiliser**

**Connection to Shrink Wrapper**



### The Autopack Package :Faster - Smaller - Simpler - Better Pack

#### Standard Features

- Stainless steel construction
- Speed up to 20 trays/min
- Integrated Control
- User friendly HMI
- Hot Melt Gluing System

#### Optional Features

- Infeed with product splitter
- Stacking of products
- Product stabiliser
- Finger and overhead pusher
- High sided tray



Autopack designers pay particular attention to specifying materials and finishes that are durable, do not affect the packaged product and remain serviceable for a long time.

Explore Shrink Wrapping and our range of Machines at  
[www.autopack.com](http://www.autopack.com)

## Horizontal Collation

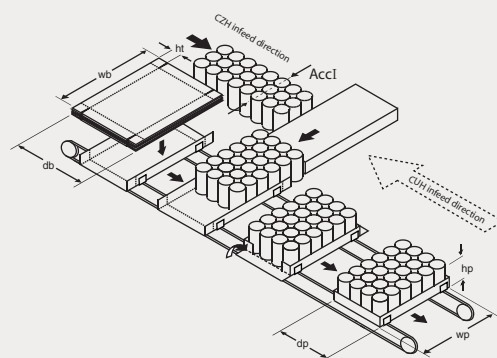
### Operation

- Products come from upstream and are distributed on single or multilanes either by accumulation or using a lane divider (optional). Products reach collating area where pusher or finger system will prepare the desired collation to be ready for loading into the blank.
- For that purpose, the tray index system prepares the tray: blank is drawn from the magazine, formed into a "U" then placed between the fingers on the chain carrier. The chain carrier then indexes the tray to the loading station to merge with the products. Once the products are transferred onto the tray, the chain carrier indexes forward to the next

station where inner corner flaps are folded and held in position during next indexing.

- During indexing, hot melted glue is applied onto the external flaps, glue shooting from top. The position and length of the glue patch is accurately controlled by the PLC program.
- The collation is then indexed to the last station where the external flaps are folded up onto the inner flaps and held firmly in position until the glue is dry and firm enough for the tray to be indexed again and released onto outfeed conveyor or infeed of the shrink wrapper.

Specification	(All parameters in mm)		60CZH / 60CUH	80CZH / 80CUH	81CZH / 81CUH
Tray Size	Max blank width	wb	540	740	740
	Max blank depth	db	430	430	430
	Min-Max tray height <sup>1)</sup>	ht	30-300	30-300	30-300
Pack Size	Pack width / Flap <70mm	wp	190-400	190-600	190-600
	Pack width / Flap <105mm	wp	190-330	190-530	190-530
	Pack width / Flap <140mm	wp	-	190-460	190-460
	Pack Depth <sup>2)</sup>	dp	120-320	120-410	120-320
	Pack height	hp	50-300	50-300	50-300
	Max Across Infeed	Accl	425	425	425
Packing Speed <sup>3)</sup>	Trays/min		13-20	12-20	12-20
Electrical Supply	Average Power	kW	2.5	2.5	2.5
	Max Power	kW	6	6	6
Available in 220/380/415, 3ph, N+E, 50/60Hz					
Compressed Air	Working pressure	kPa	600	600	600
	Consumption	NL/Cycle	26	26	26
		CFM	16	16	16

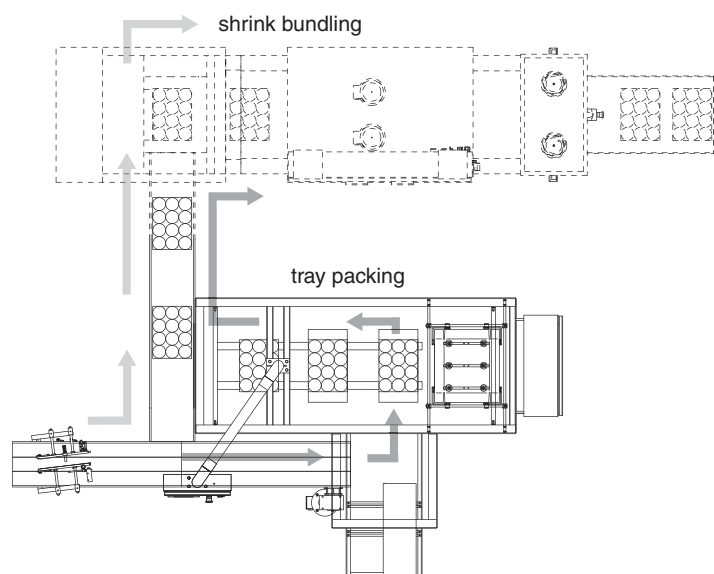
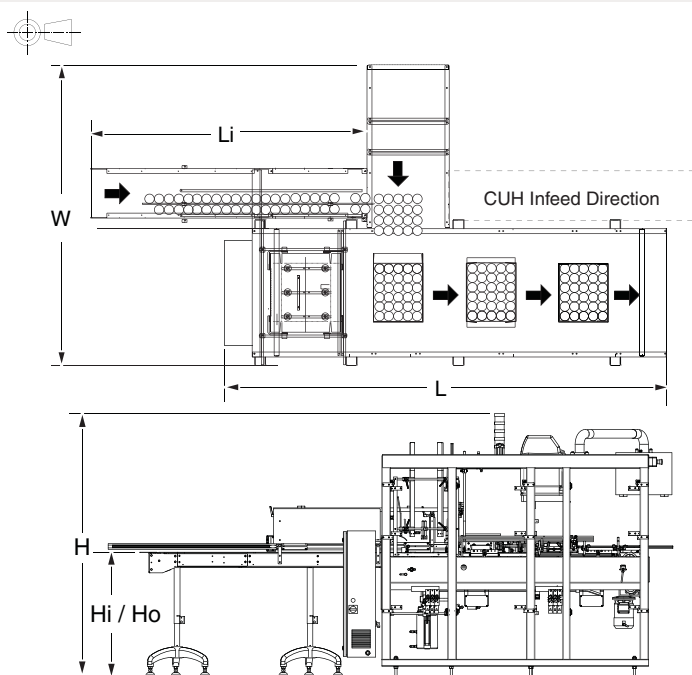


#### Note:

- 1) Minimum tray height can be as low as 30mm providing special preparation of cardboard. Also maximum tray height can be increased with special features such as inclined blank magazine and adapted blank extraction mechanism. Please contact us to discuss more details.
- 2) Minimum pack depth can be as less as 60mm with special machine design. Please contact us to discuss more details.
- 3) Packing speed depends on product depth and width, as well as the number of products on tray.
- 4) Height is adjustable from 850mm up to 900mm. Extension possible on request.

Dimension	(All parameters in mm)		60CZH / 60CUH	80CZH / 80CUH	81CZH / 81CUH
Total System	Machine height <sup>4)</sup>	H	1855	1855	1855
	Min. operating height <sup>4)</sup>		850	850	850
	Machine width	W	2040	2240	2240
	Tray packer length	L	2185	2600	2185
	Infeed conveyor length	Li	1715	1715	1715
	Infeed height	Hi	850	850	850
	Oufeed height	Ho	850	850	850

Above parameters are constantly reviewed and updated and may vary from project to project depending on customers requirements.



Example of CUH + SLU compact combination for tray packing and/or shrink